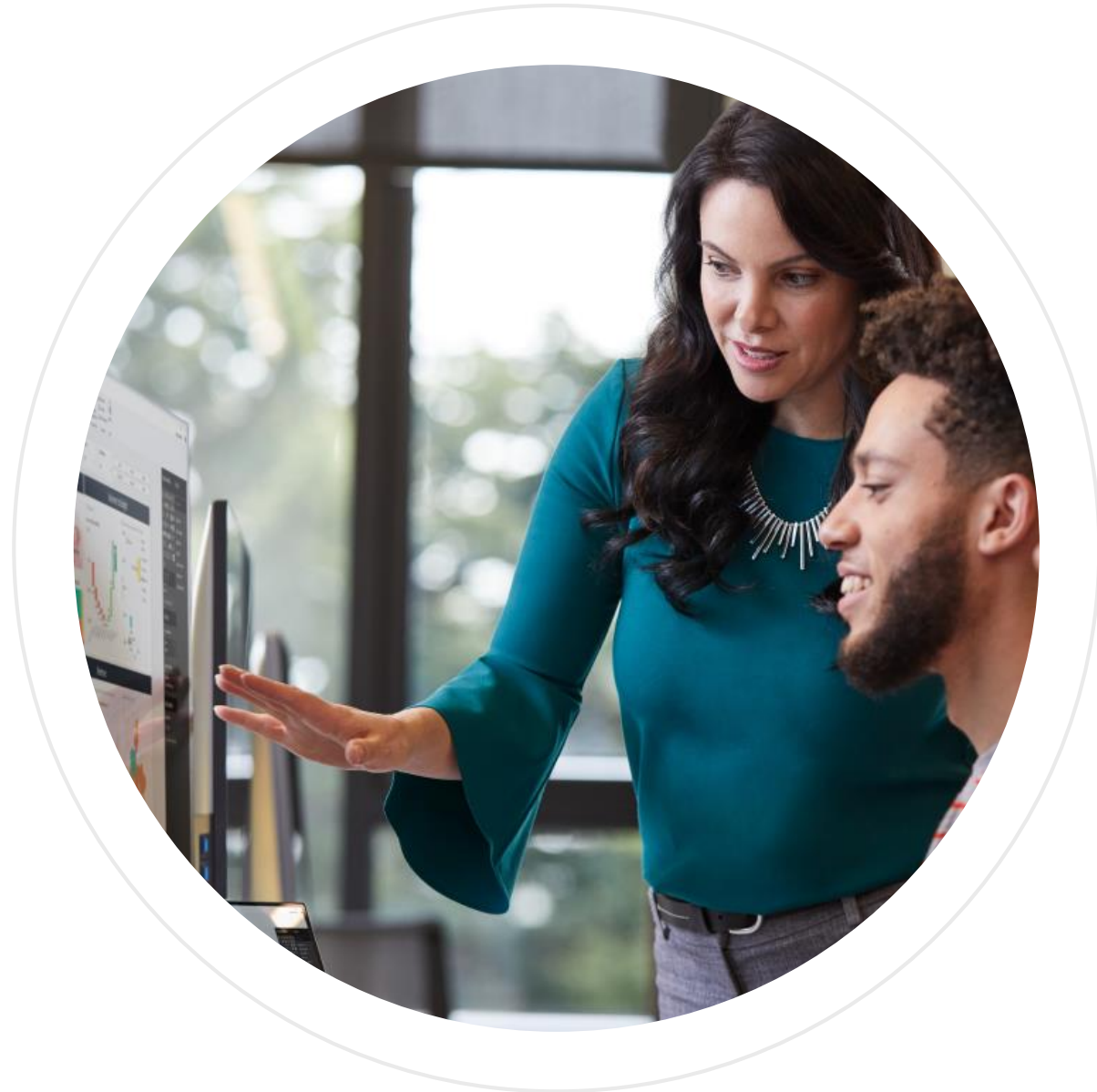


Module 1: Getting Started with Microsoft Data Analytics



Learning Objectives

You will learn the following concepts:

- Data Analysis
- Getting Started with Power BI

Module Agenda



Data Analytics and Microsoft



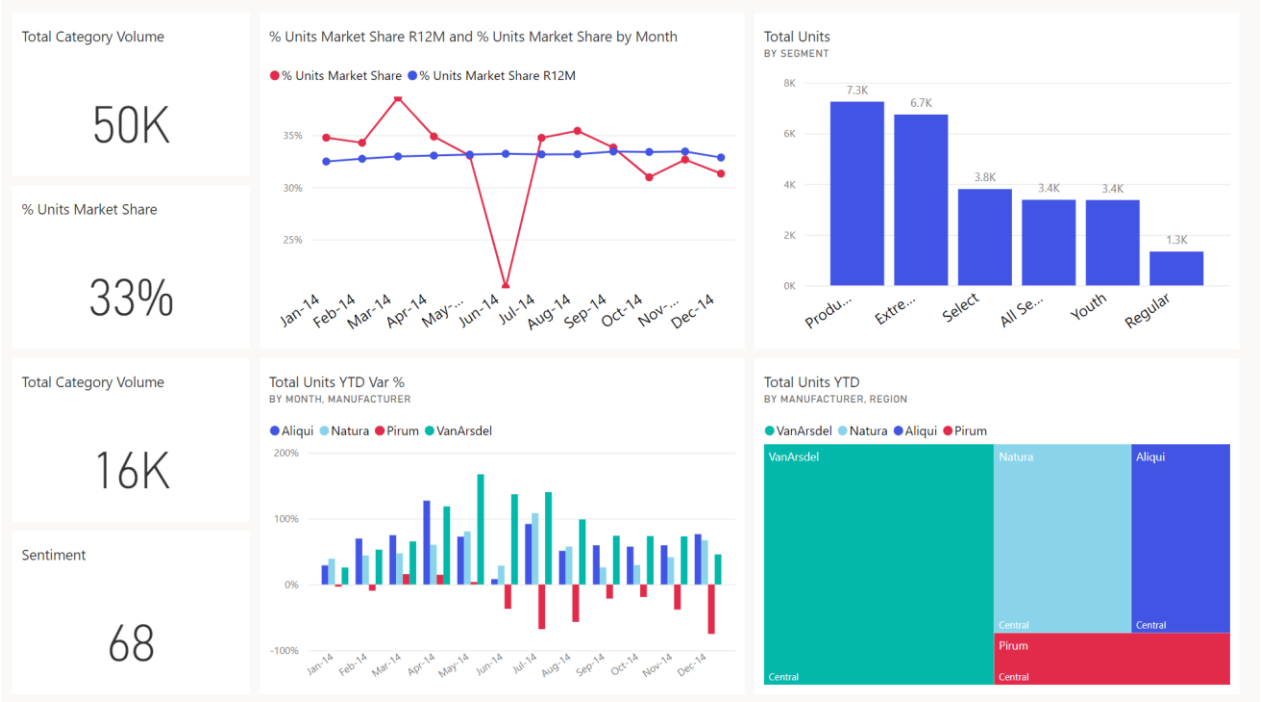
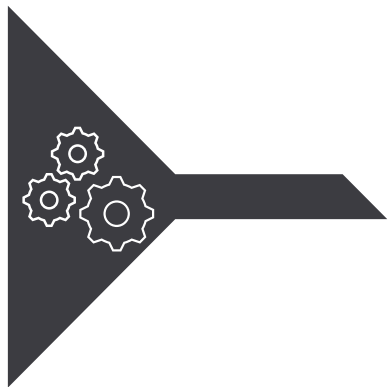
Getting Started with Power BI

Lesson 1: Data Analytics and Microsoft



Introduction

Data and information is the most strategic business asset.



Overview of Data Analysis

Data Analysis is telling a story with data.

Five categories of analytics:

- Descriptive
- Diagnostic
- Predictive
- Prescriptive
- Cognitive



Roles in Data

- Business Analyst
- Data Analyst (PL-300)
- Data Engineer (DP-203)
- Data Scientist (DP-100)
- Database Administrator (DP-300)

Tasks of a Data Analyst



Prepare



Model



Visualize



Analyze

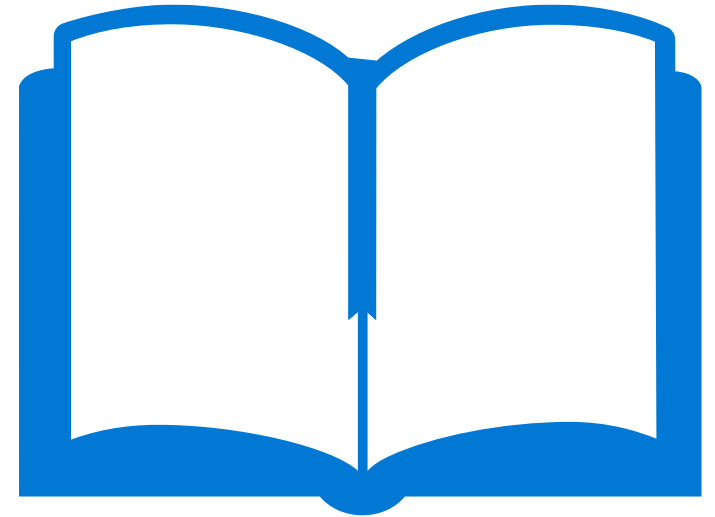


Manage

References

PL-300 Create dashboards in Power BI

<https://docs.microsoft.com/en-us/learn/modules/create-dashboards-power-bi/>



Review Questions

Q01 – Which data role enables advanced analytics capabilities through reports and visualizations?

- A01 – Data Analyst

Q02 – Which data analyst task has critical performance impact on reporting and data analysis?

- A02 – Model

Q03 – What is a key benefit of data analysis?

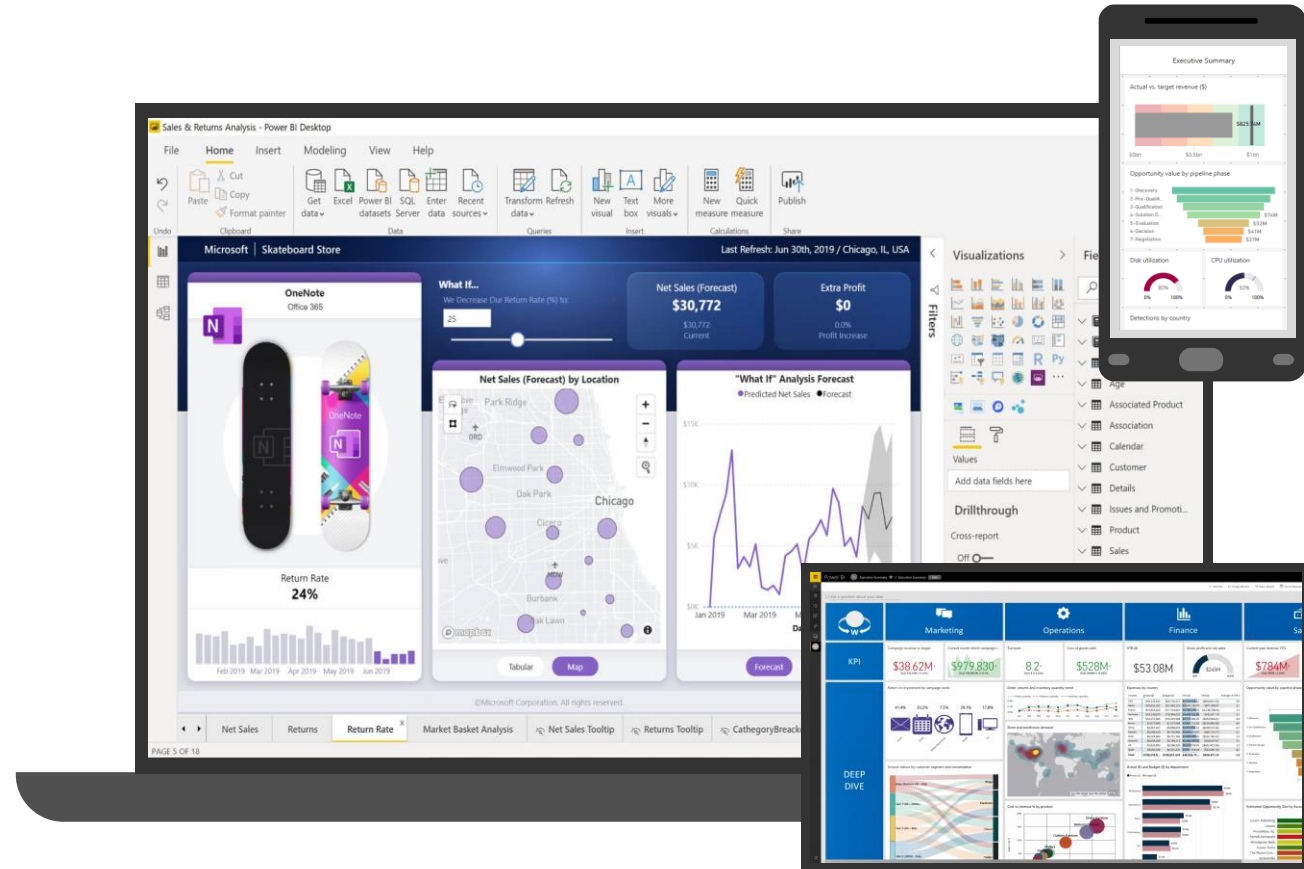
- A03 – Informed business decisions

Lesson 2: Getting Started with Power BI

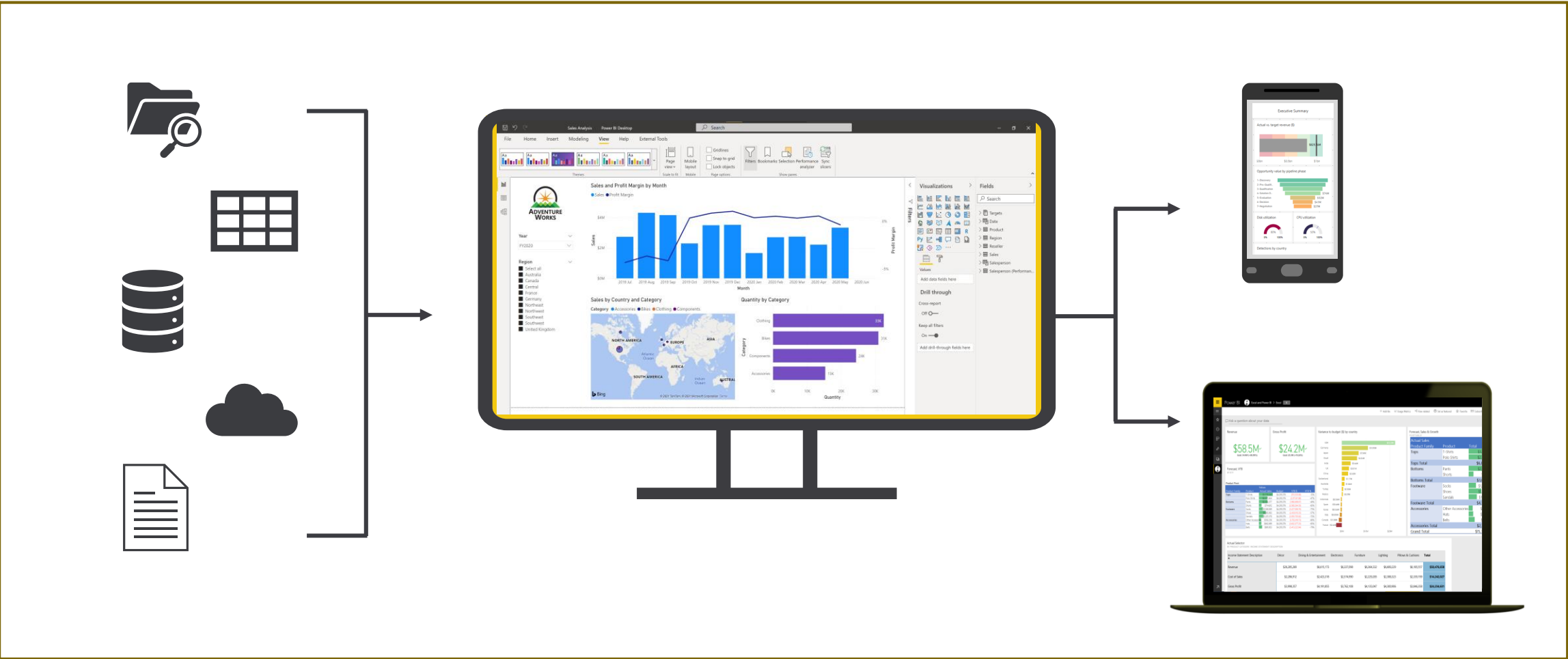


Introduction to Power BI

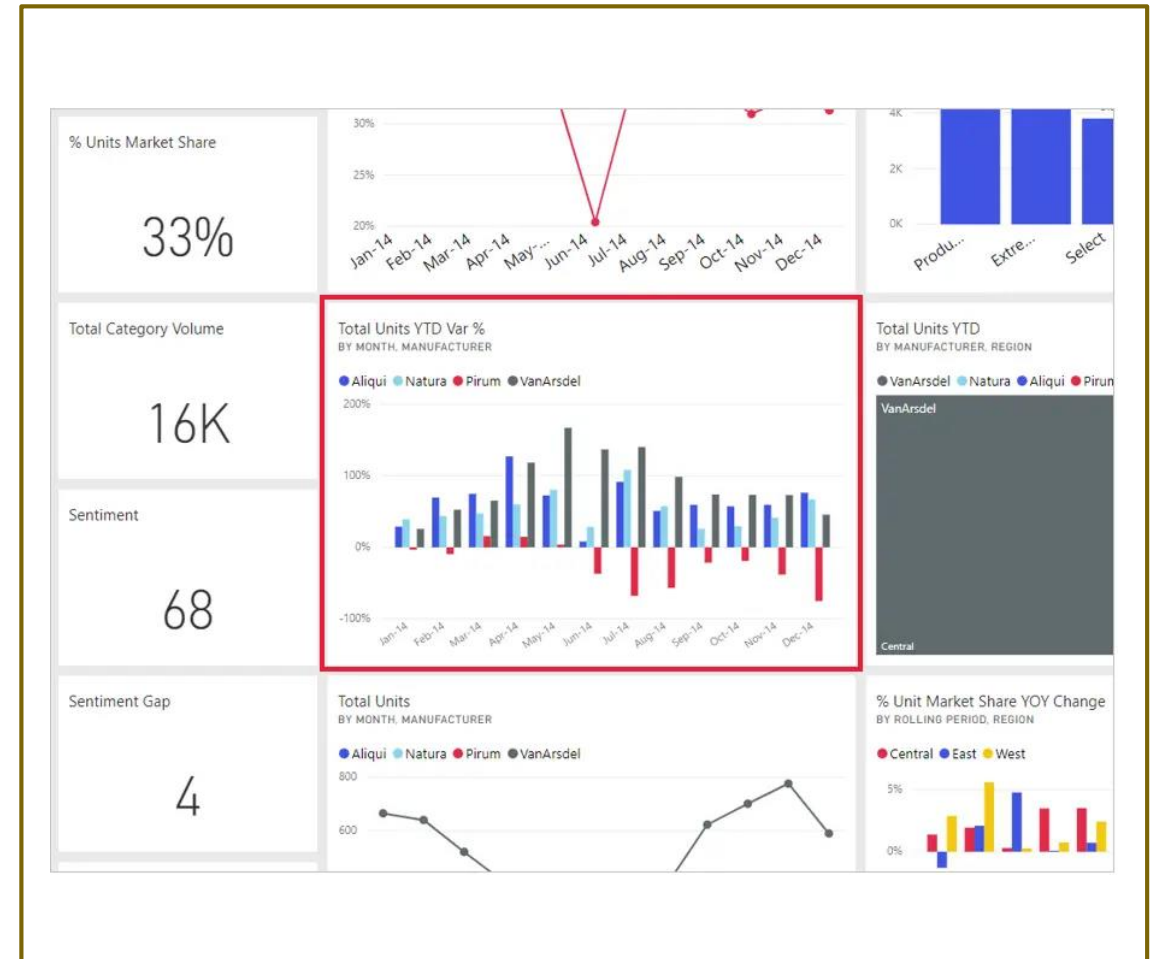
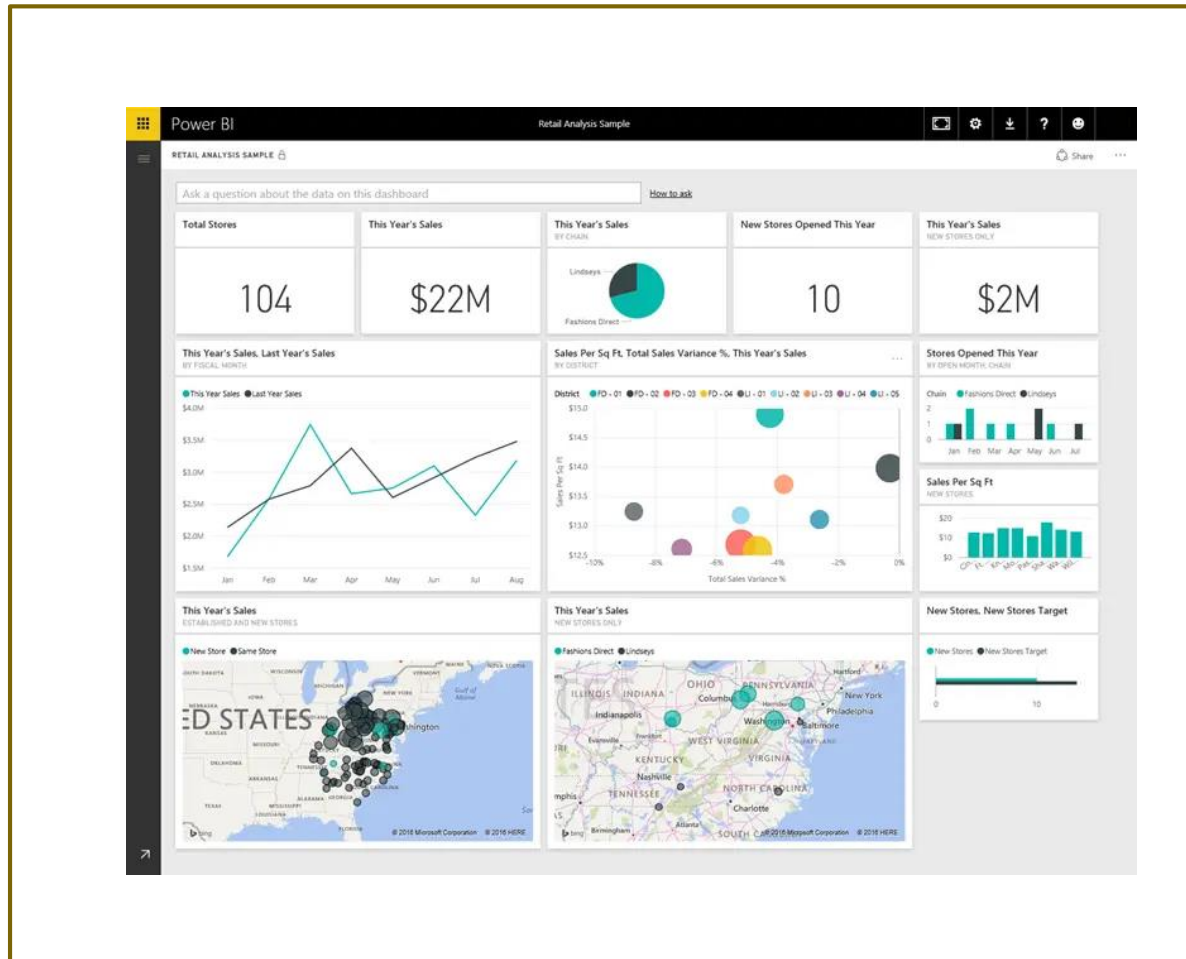
Power BI: A collection of software, services, apps, and connectors.



Use Power BI

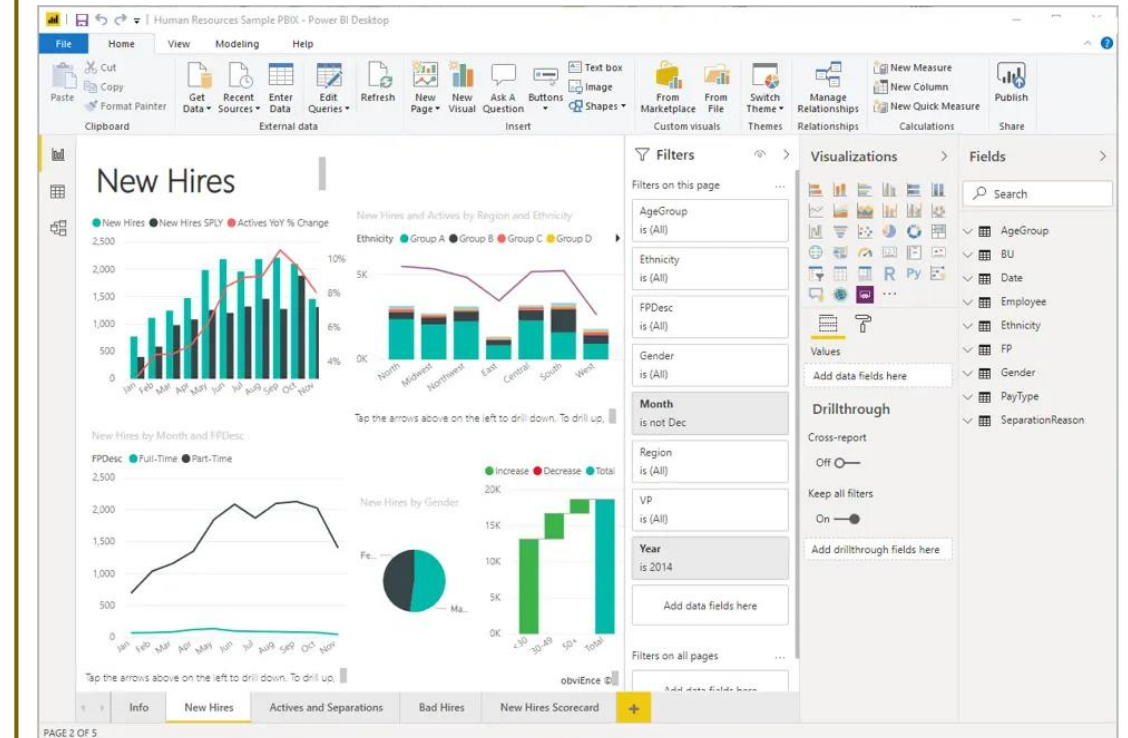


Building Blocks of Power BI

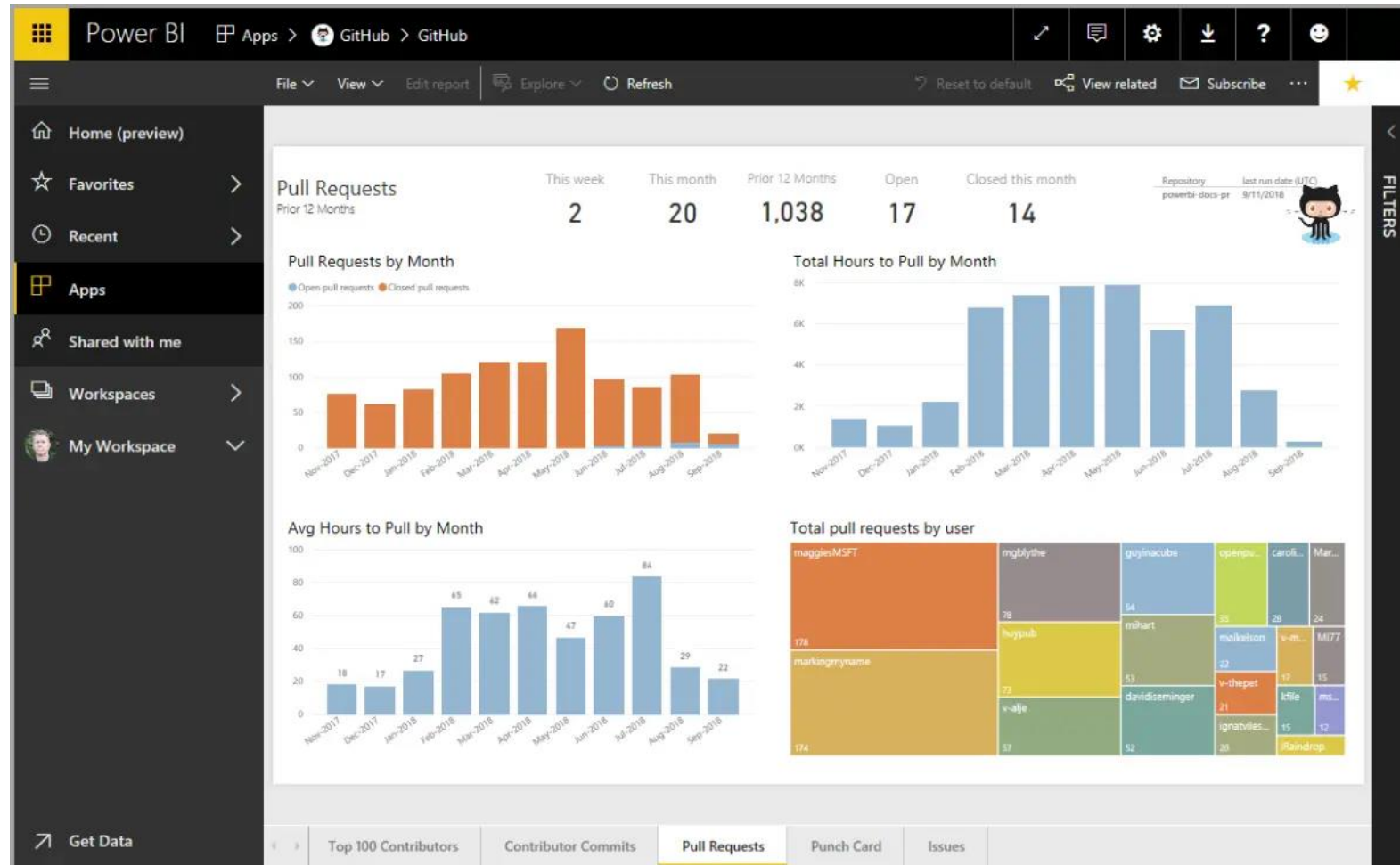


Building Blocks of Power BI

	B	C	D	E	F	G	H
1	Year	Month	Month Name	Calendar Month	Births	Births Per Day	Births (Normalized)
2119	2004	1	January	1/1/2004	2,937	94.7	2842
2120	2004	2	February	2/1/2004	2,824	97.4	2921
2121	2004	3	March	3/1/2004	3,128	100.9	3027
2122	2004	4	April	4/1/2004	2,896	96.5	2896
2123	2004	5	May	5/1/2004	3,008	97.0	2911
2124	2004	6	June	6/1/2004	3,047	101.6	3047
2125	2004	7	July	7/1/2004	2,981	96.2	2885
2126	2004	8	August	8/1/2004	3,079	99.3	2980
2127	2004	9	September	9/1/2004	3,219	107.3	3219
2128	2004	10	October	10/1/2004	3,547	114.4	3433
2129	2004	11	November	11/1/2004	3,365	112.2	3365
2130	2004	12	December	12/1/2004	3,143	101.4	3042
2131	2005	1	January	1/1/2005	2,921	94.2	2827
2132	2005	2	February	2/1/2005	2,699	96.4	2892
2133	2005	3	March	3/1/2005	3,024	97.5	2926
2134	2005	4	April	4/1/2005	3,037	101.2	3037
2135	2005	5	May	5/1/2005	3,231	104.2	3127
2136	2005	6	June	6/1/2005	3,163	105.4	3163
2137	2005	7	July	7/1/2005	3,119	100.6	3018
2138	2005	8	August	8/1/2005	3,156	101.8	3054
2139	2005	9	September	9/1/2005	3,439	114.6	3439



Touring and Using Power BI



Review Questions

Q01 – What are the building blocks of Power BI?

- A01 – Visualizations, Datasets, Reports, Dashboards, and Tiles

Q02 – What is the common flow of activity in Power BI?

- A02 – Bring data into Power BI Desktop and create a report, share it to the Power BI service, view and interact with reports and dashboards.

Q03 – A collection of ready-made visuals, pre-arranged in dashboards and reports is called what?

- A03 – An App

Module Overview

We covered the following concepts:

- Data Analysis
- How to get started with Power BI

References

PL-300 Discover data analysis

<https://docs.microsoft.com/en-us/learn/modules/data-analytics-microsoft/>

PL-300 Get started building with Power BI

<https://docs.microsoft.com/en-us/learn/modules/get-started-with-power-bi/>

