


Qlik Sense
Analytics
Development

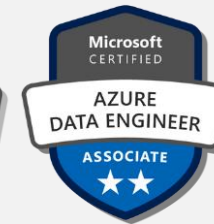


Presenter



 /arifmazumder

Mohammed Arif, PhD
Lead Data Scientist
Big Data | Machine Learning | AI

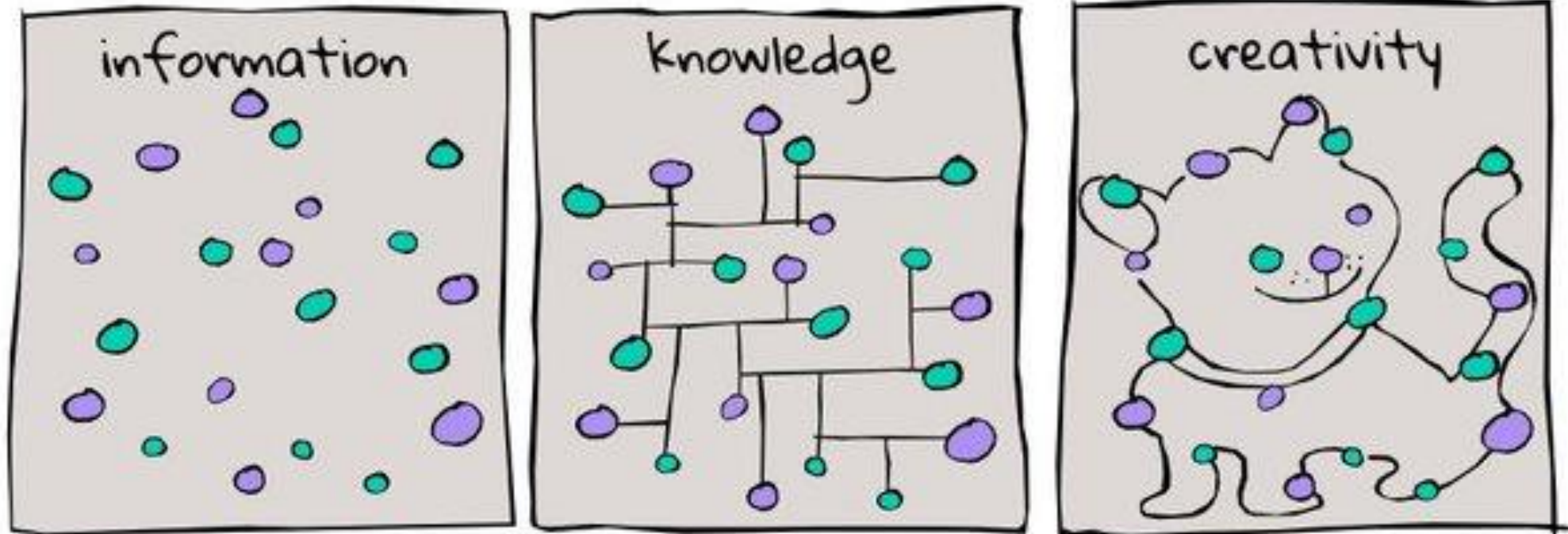


Mohammed Arif has more than sixteen (16) years of working experience in Information Communication and Technology (ICT) industry. The highlights of his career are more than six (7) years of holding various senior management and/or C-Level and had five (5) years of international ICT consultancy exposure in various countries (APAC and Australia), specially on Big Data, Data Engineering, Machine Learning and AI arena.

He is also Certified Trainer for Microsoft.



Resources Links : <http://arif.works/qlik>

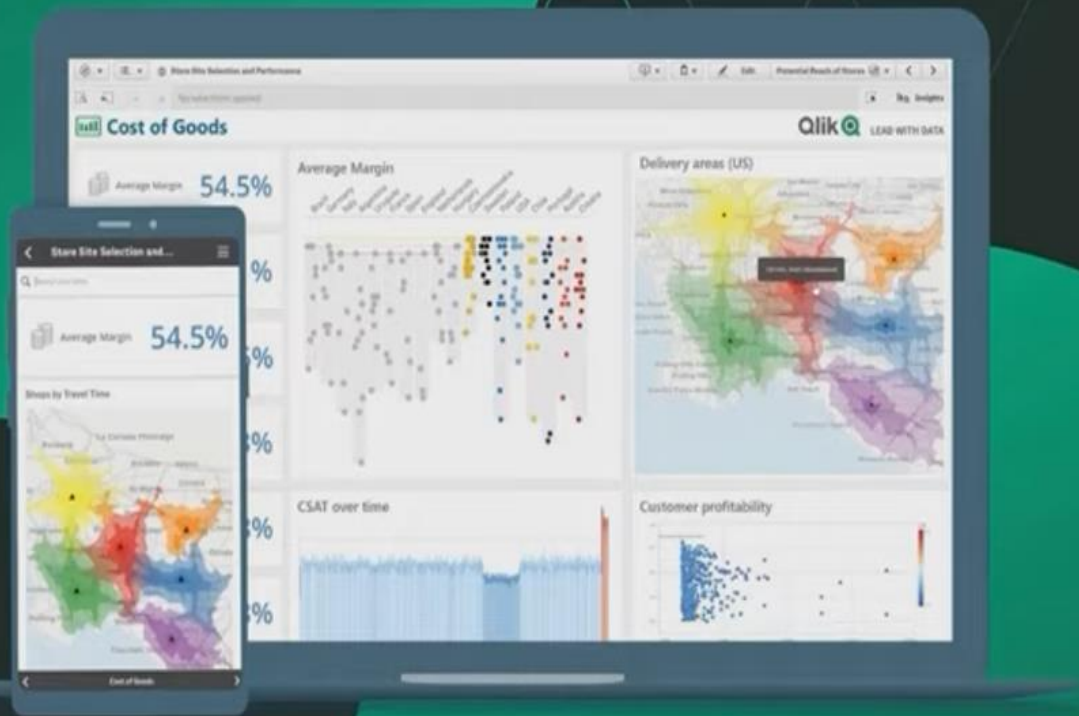


The background is a dark teal color with several lighter teal circles of varying sizes and thin white lines scattered across it. The text is centered in the middle of the frame.

What is QlikSense?

QlikSense

Self-Service Business Intelligence
and Visual Analytics Platform.



Advantages of using Qlik Sense



MAKES
ANALYTICS
EASY



INSTANTLY
OUTPUTS
INSIGHTS



EFFICIENT
COLLAB



EMBEDDED
ANALYTICS



SECURE,
CENTRALLY
MANAGED AND
CAN SCALE
ACROSS
THE CLOUD



Qlik Sense Environments



Qlik Sense Desktop



Qlik Sense Enterprise



Cloud Editions of
Qlik Sense



- Single User Solution
- Can be downloaded & installed for free
- No App sharing feature
- No Autosave function
- Dynamic views are not supported
- Duplicating apps is not supported

Qlik Sense Desktop



- Organization-wide Solution
- Multi-cloud: Server-based or SaaS
- Needs a license
- All applications are centrally located on a server
- Automated Data refresh & rule-based security
- Admins are the only ones that can upload apps

Qlik Sense Enterprise



- SaaS Service
- Does not have a central dedicated server
- Users can share, collaborate & create their dashboards via web browser
- No Data refresh function
- All organizations users can see each app created

Cloud Editions of Qlik Sense

SECTION 2 CHALLENGE

Who's nailing it?



Who's nailing it?

Section 2 Challenge

It is end of the financial year and that means time to see who the star performers are.

Our hardware store operates in three regions, and the top salesperson in each region wins a trip to Hawaii.

The executives have asked you to identify who the employees are that qualify for the prizes.

Note: Employees are measure on total value of sales (\$).



SHOWDOWN

Dimension vs. Measure



Dimension vs. Measure Showdown

Dimension

Dimensions determine how the data in a visualization is grouped

Categorical / Qualitative

Measure

Calculations used in visualizations

Created from an expression composed of aggregation functions.

Numerical / Quantitative

Dimension vs. Measure Showdown

Department

Sales (\$)

Order Number

Dimension

Dimensions determine how the data in a visualization is grouped

Categorical / Qualitative

Measure

Calculations used in visualizations
Created from an expression composed of aggregation functions.

Numerical / Quantitative

Dimension vs. Measure Showdown

Department

Sales (\$)

Order Number

Dimension

Dimensions determine how the data in a visualization is grouped

Categorical / Qualitative

Department

Measure

Calculations used in visualizations
Created from an expression composed of aggregation functions.

Numerical / Quantitative

count(Department)

Dimension vs. Measure Showdown

Department

Sales (\$)

Order Number

Dimension

Dimensions determine how the data in a visualization is grouped

Categorical / Qualitative

Department

Sales buckets

Measure

Calculations used in visualizations

Created from an expression composed of aggregation functions.

Numerical / Quantitative

count(Department)

sum(Sales)

Dimension vs. Measure Showdown

Department

Sales (\$)

Order Number

Dimension

Dimensions determine how the data in a visualization is grouped

Categorical / Qualitative

Department

Sales buckets

Order Number

Measure

Calculations used in visualizations

Created from an expression composed of aggregation functions.

Numerical / Quantitative

count(Department)

sum(Sales)

count(Order Number)

Aggregation

Item	...	Units	Unit Price
a	...	10	50
b	...	2	5
c	...	8	15

Sum (Units * Unit Price)				
Item	...	Units	Unit Price	<i>Sum</i>
a	...	10	50	<i>500</i>
b	...	2	5	<i>10</i>
c	...	8	15	<i>120</i>

= 630

sum(Units) * sum(Unit Price)			
Item	...	Units	Unit Price
a	...	10	50
b	...	2	5
c	...	8	15
<i>sum</i>		<i>20</i>	<i>70</i>

= 1400


Aggregation

Item	...	Units	Unit Price
a	...	10	50
b	...	2	5
c	...	8	15

Sum (Units * Unit Price)				
Item	...	Units	Unit Price	<i>Sum</i>
a	...	10	50	<i>500</i>
b	...	2	5	<i>10</i>
c	...	8	15	<i>120</i>

= 630

sum(Units) * sum(Unit Price)				
Item	...	Units	Unit Price	
a	...	10	50	
b	...	2	5	
c	...	8	15	
<i>sum</i>			<i>70</i>	<i>1400</i>



RECAP

Section 2



Section 2 Recap

- ✔ Installation
 - ✔ Overview of Qlik products
 - ✔ Lightning fast insights using Qlik
Sense's Insights Advisor
 - ✔ Connecting to our data
 - ✔ Data connectors
- ✔ Navigating the interface
 - ✔ Dimensions and Measures
 - ✔ Chart expressions
 - ✔ Aggregating data
 - ✔ Alternative measures
 - ✔ Exporting charts

SECTION 3 CHALLENGE

Dash it!



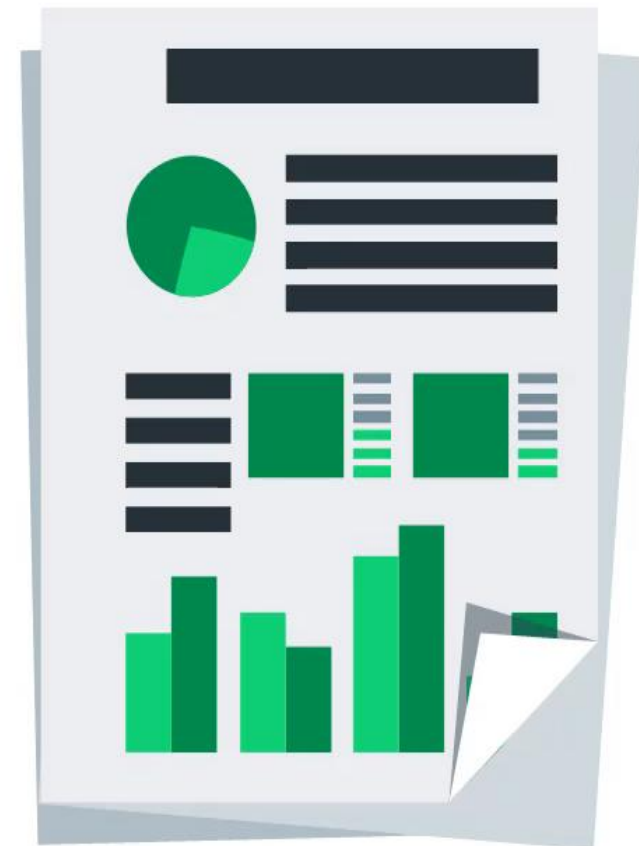
Dash it!

Section 3 Challenge

Supplies-R-Us needs assistance with analysing their sales data, with specific focus on profit and discounts offered.

The assignment is vague, but the CEO has indicated he would like to see some trends and patterns highlighted, which can be translated into some actionable insights.

He has hinted at a fully interactive dashboard which can be used for further deep dives.



Order and Order Lines data have been supplied in an accompanying Excel file.

More about Supplies-R-Us:

- Supplier of Office supplies, Furniture and Technology equipment.
- Has been operating for the last three years.
- Operates in multiple countries throughout Europe.



RECAP

Section 3



Section 3 Recap

- ✓ Associating data
- ✓ Working with maps (layers)
- ✓ Map hierarchies (drill down)
- ✓ Solving incorrect geographic mapping
- ✓ Chart expressions
- ✓ Master items
- ✓ Scatterplots
- ✓ TOTAL keyword
- ✓ KPIs and BANs
- ✓ Filter pane
- ✓ Additional sheets